



LYGIA BEACH APARTMENTS

The Property

At the southern shore of the Corinthian Bay lies the Municipality of Evrostini, which at the western part has a common boundary with the Municipality of Achaia and the Municipality of Xilokastro. The municipality of Evrostini includes the villages of Sarandapiho, Evrostini-Rozena Helidoni, Kalithea Pirgos, Eliniko, Derveni, which is the seat of the municipality Ligia, Stomi and Likoporia.

At the northern part of the Old National Road right at the beach lays a beautiful pine forest 20,000 square meters! This is the only one at the area.

A 6000 square meter area of sports with tennis, volleyball, basketball and soccer courts lie at a short distance from the building plot. Ligia is a village with the most beautiful beaches of the area. It is one of the most picturesque villages of the municipality, with old stone houses and large orchards. The stone built church of Agios Spiridon enchants every visitor. The impressive locations with great beaches and unique landscapes also present an archaeological interest. The construction company of Peloponnese chose Ligia to develop traditional houses for those who wish to enjoy the sea at such a short distance from Athens.

The building plot is located on the coast of Lygia and osculates the sea. It has an area of 7750 sq.m (with a perspective of becoming 10000 sq.m) and a façade of 45m. Its hypsometrical difference within the property is such that allows even the furthest buildings from the façade to have sea view. The form factor of the area is 1.

The Complex

The building plot is located on the coast of Lygia and osculates the sea. It has an area of 7750 sq.m (with a perspective of becoming 10000 sq.m) and a façade of 45m. Its hypsometrical difference within the property is such that allows even the furthest buildings from the façade to have sea view. The form factor of the area is 1.0

EXPLOITATION DATA

The building plot has a capacity to have 100 to 180 apartments developed, 50% of which will be 50-60 sq.m and the remaining 50% of 80-100 sq.m. The construction will be completed in two phases, so that the construction cost is limited and the construction quality is better and detailed. Initially, 65 direct sea view apartments will be constructed. The second phase will be the development of the other 55 apartments.

Brief Description of the Complex

The building complex is comprised of six buildings constructed with the highest standards giving a total of 100 apartments all having view at the sea. In the center of the building complex a convenient space has been laid out where a private swimming pool is constructed. All apartments have spectacular view of the sea.

All access roads for cars will be paved and provision has been made for open air parking spaces for all residents. All corridors will be laid with marble.

The complex consists of 100 apartments with 2 bedrooms .

Every apartment has:

- central heating
- double glazing
- central safety door
- floors covered with tiles
- complete preliminary work for future installation of alarm system

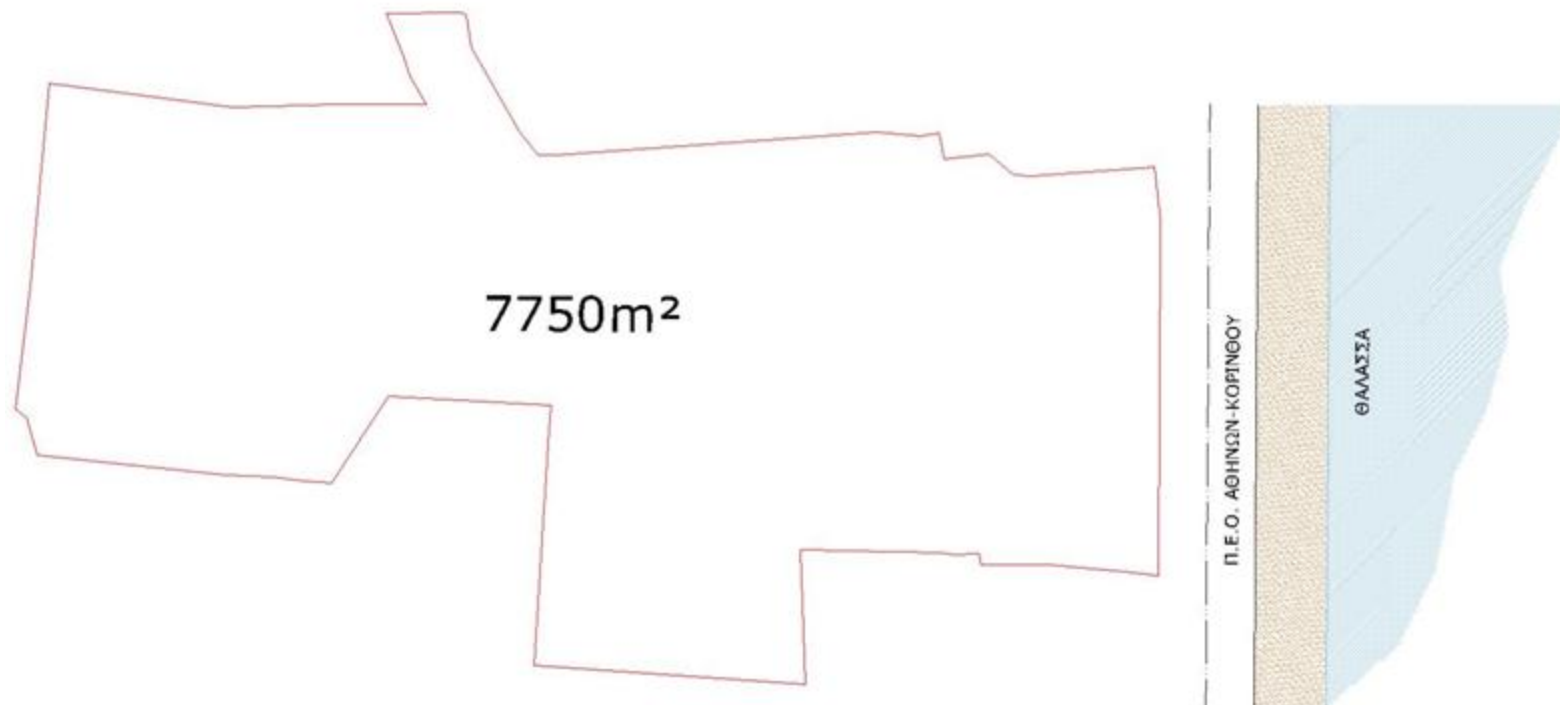
View of the plot to the sea



Perspectives of the project



Topographic plan



Typical floor One bedroom & Two bedroom apartments

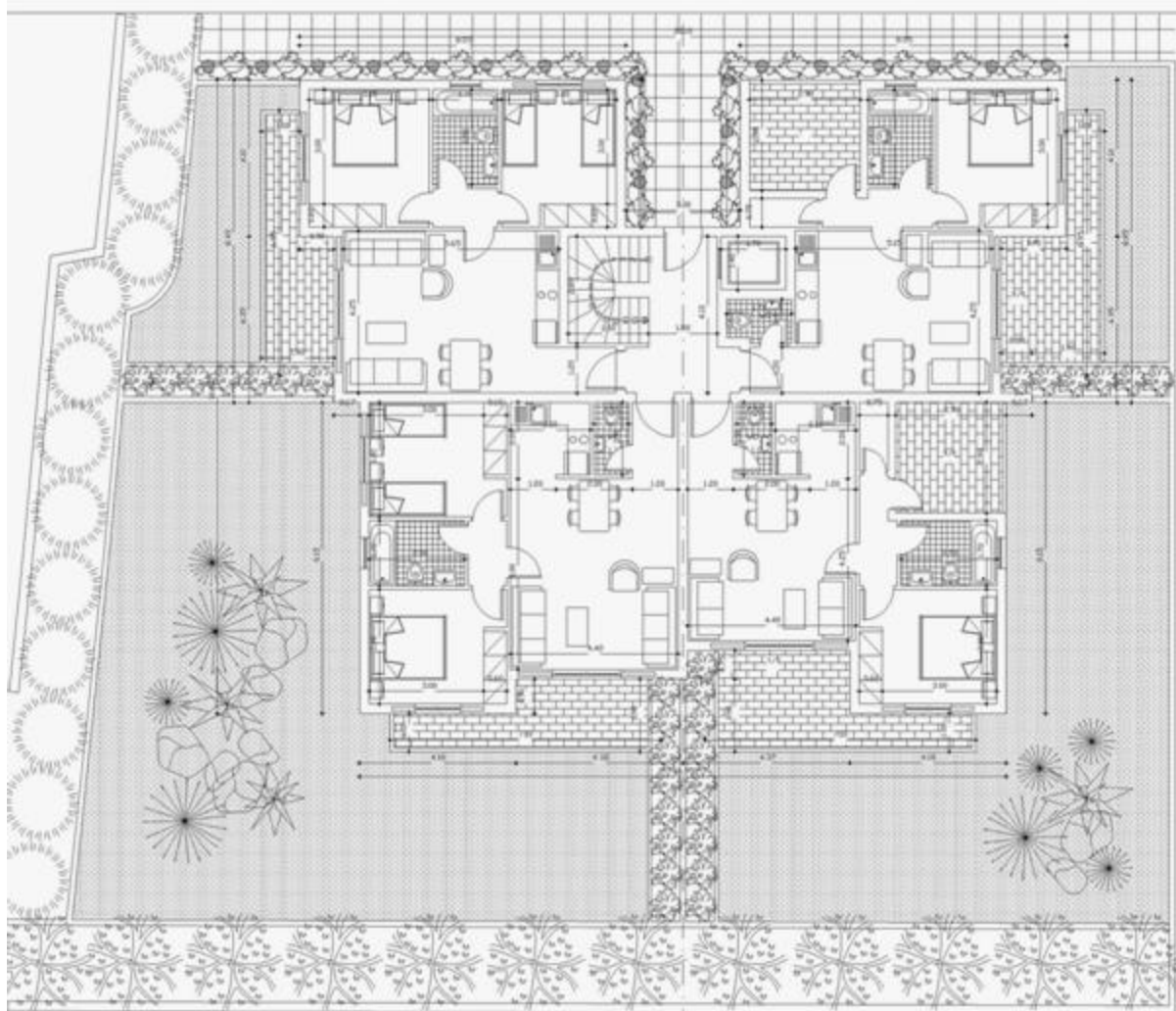


Table - Description of the apartments of the buildings for sale

PROJECT	LUGIA - BUILDINGS A,B,Γ,Δ,E,Z				
FLOOR	APARTMENT	MAIN (USABLE AREA) (m2)	BALCONIES (m2)	GARDEN	COMMON AREAS (m2)
GROUND FLOOR	A.ΙΣ.1	55	13.2TM		
	ΑΙΣ.2	55	13.5TM		
	ΑΙΣ3	55	13.2TM		
	ΑΙΣ4	55	13.5TM		
1 ST FLOOR	A1	55	13.2TM		
	A2	55	13.5TM		
	A3	55	13.2TM		
	A4	55	13.5TM		
2 ND FLOOR	B1	55	13.2TM		
	B2	55	13.5TM		
	B3	55	13.2TM		
	B4	55	13.5TM		
3 RD FLOOR	Γ1	55	13.2TM		
	Γ2	55	13.5TM		
	Γ3	55	13.2TM		
	Γ4	55	13.5TM		

Contact Information



1A Thiseos Av. & Delvinou St, Nea Erythraia, GR - 14671
Tel: +30 210 8000 808, e-mail: info@gikaikataskevi.gr